



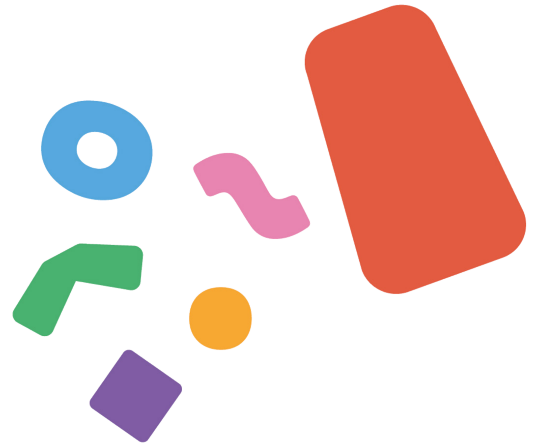
BIERGERPAKT

WELCOME KIT



VERSION 03/2025

MOIEN AND WELCOME TO THE BIERGERPAKT



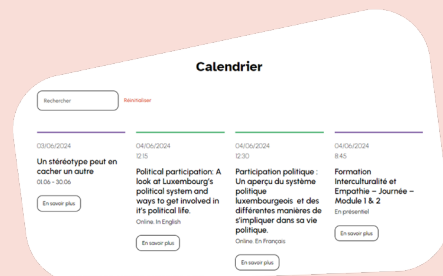
Thank you for your interest and commitment!

This welcome kit is designed to guide you through the intercultural living-together programme.

Important

You'll receive a newsletter regularly by email informing you of the programme's current offer.

Our website www.biergerpakt.zesummenliewen.lu has all the information you need to choose the courses which suit you best.



To get an overview of the Grand Duchy of Luxembourg, find out about its languages and get to know administrative procedures in Luxembourg,

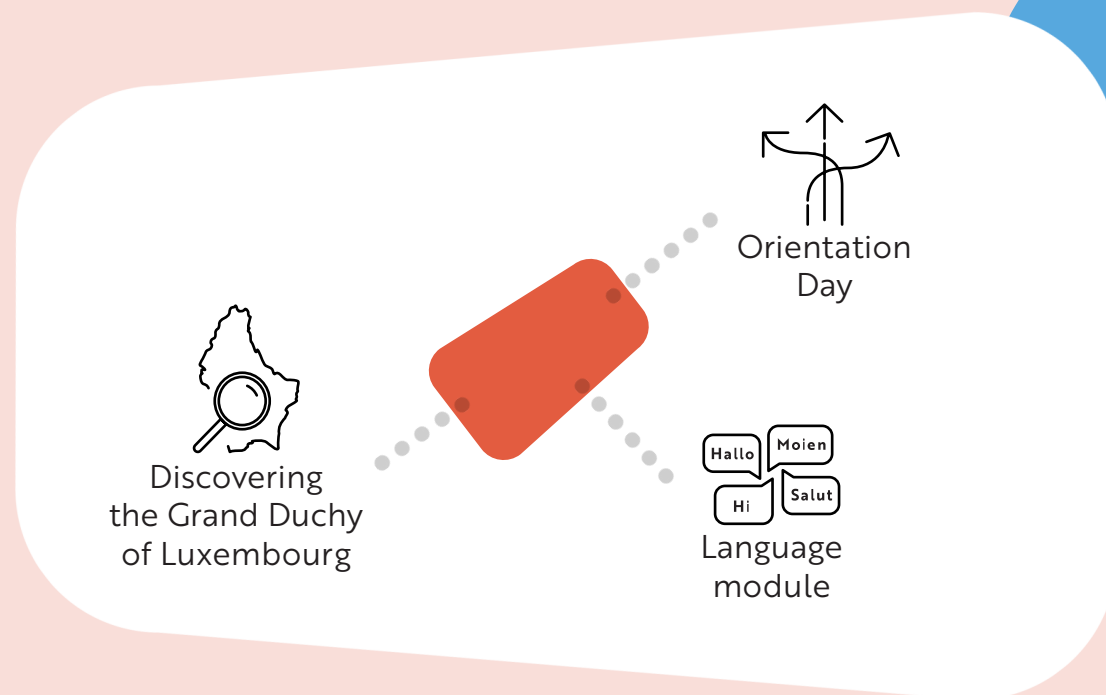
→ [take part in the introductory modules.](#)

To find more specific information on topics that interest you, make new contacts and get more involved in Luxembourg's social life,

→ [see what is available in the advanced modules catalogue and sign up.](#)



1. THE 3 INTRODUCTORY MODULES



Language module

You can use the free online language platforms to learn one of the three administrative languages of Luxembourg and reach at least level A1. The three administrative languages of Luxembourg are:

Luxembourgish, French & German.

To learn Luxembourgish, go to www.llo.lu.

To learn French and German, ask for your activation code to access the Biergerpakt language platform.

→ Ask for your code [here](#).

→ Find out more about the [language platform](#).

Visit our [website](#) for more information on language learning.

IMPORTANT

Once you've reached the desired language level, send us your level test results and the list of courses you've taken so that your participation in this module can be validated. You'll find both documents on the platform.

Please email them to bp@fm.etat.lu.

Orientation Day

Don't miss this event when you'll have the opportunity:

- to learn more about the administrative procedures that interest you;
- to join interactive workshops and learn about various opportunities to take part in and become involved with life in Luxembourg;
- to get answers to your specific questions by visiting information stands run by Government ministries, agencies and associations;
- to join in participatory workshops about life in Luxembourg.



Two Orientation Days are organised each year. Attend at least one of these events in order to complete this module.

Discovering the Grand Duchy of Luxembourg

- Find out about the diversity and wonders of Luxembourg.
- Learn about Luxembourg's history, traditions and values.
- Share your own experiences.
- Play a more active role in life in Luxembourg.

This 6-hour module (spread over 2-3 sessions) is offered in Luxembourgish, French, German, English and Portuguese – and in other languages according to demand.

→ To register click [here](#).



IMPORTANT

Completion of the three introductory modules is taken into account, under certain conditions, when applying for long-term resident status and when applying for the Luxembourg nationality by option.

You'll receive a certificate as proof of your commitment.

2. ADVANCED MODULES

Take a look at our [online catalogue](#) and select the courses and activities that interest you. The catalogue will continue to be developed and includes modules in the following areas:



Learning and practicing languages



Understanding administrative procedures



Deepening your knowledge of Luxembourg



Committing to diversity and against racism and discrimination



Actively participating as a citizen

Please note

You may complete the modules in any order. You do not have to complete the introductory modules before starting the advanced modules. The courses and activities available are regularly updated.

CONTACT

Team Biergerpakt

Tel: 8002 0044

Mail: bp@fm.etat.lu

F.A.Q.

What am I committing to when I sign up to the Biergerpakt (Citizen Pact)?

You're making a moral commitment to intercultural living-together which gives access to the programme modules.

Does the Biergerpakt have a fixed duration?

No, it doesn't have a fixed period, but if after two years you haven't done any modules, all your personal data will be anonymised.

Can I join the Biergerpakt again if my file has been closed?

Yes, you can join the Biergerpakt again if you want to.

Do I have to participate in the Biergerpakt in order to apply for the Luxembourg nationality?

No, to apply for Luxembourg nationality there is no obligation to join the Biergerpakt. However – under certain conditions – you have the possibility of applying for nationality by option if you've completed the three introductory modules of the intercultural living-together programme.

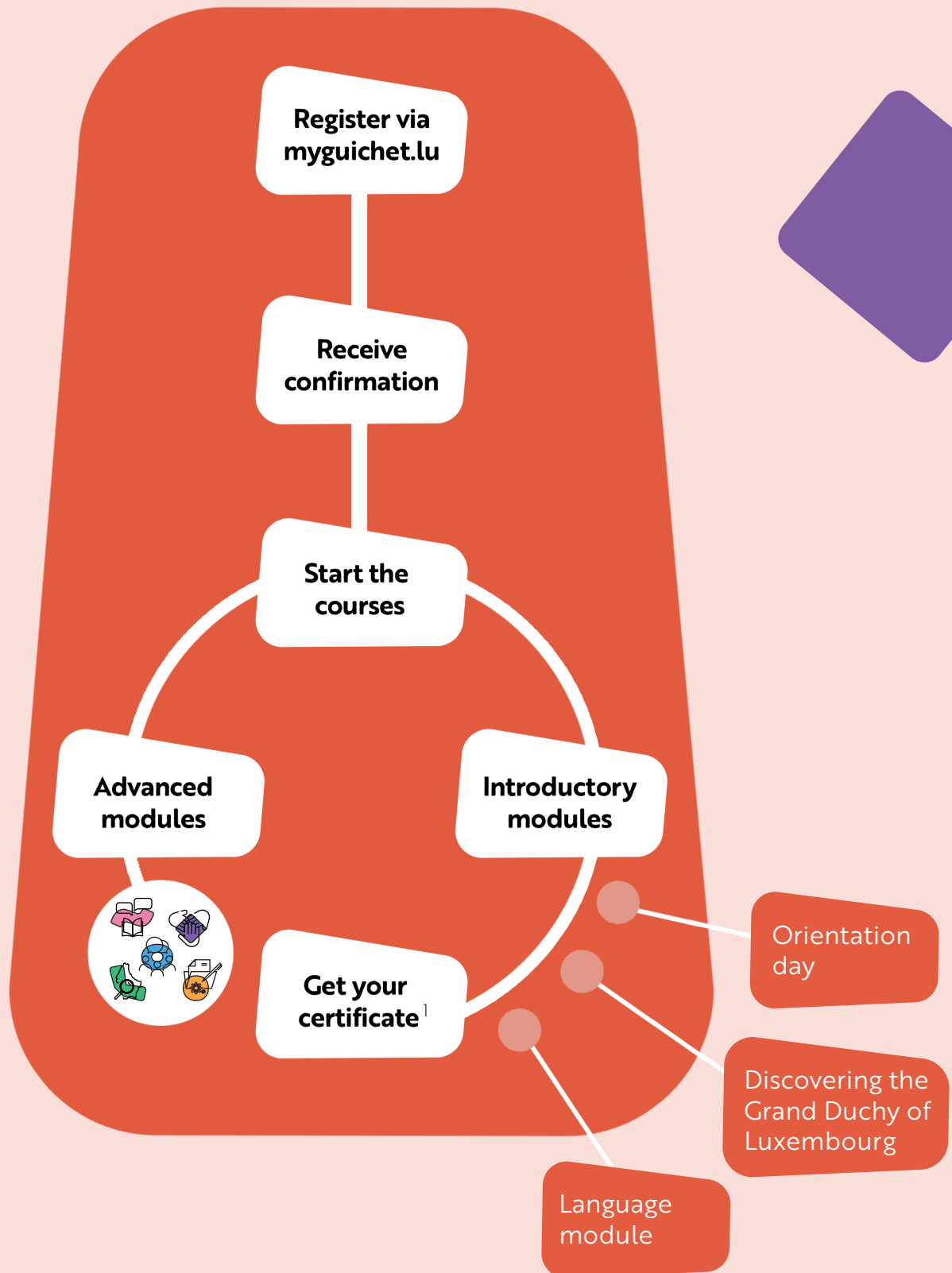


BIERGERPAKT SURVEY

Answer our survey and tell us what you think (duration 3-5min).



ROAD MAP



1. Under certain conditions, completion of the three introductory modules is taken into account when applying for long-term resident status and for Luxembourg nationality by option.